

# Cyber-security: Why should we care?

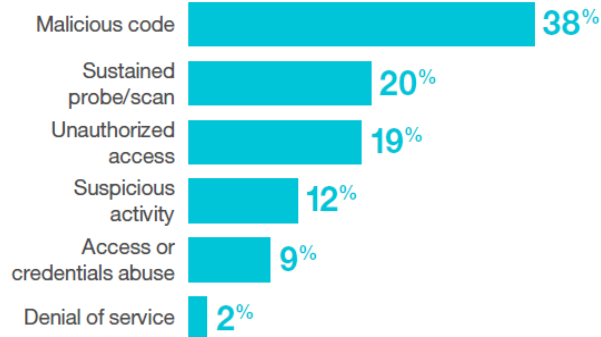


**Cristian A. Hamilton**

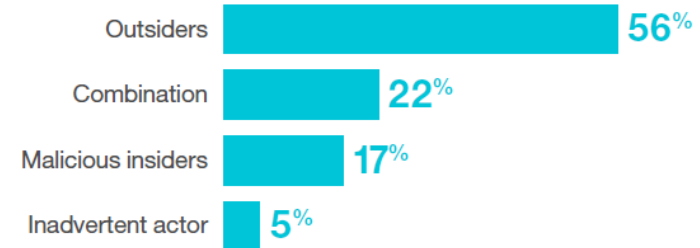
Global Director X-Force Command Center.

# Why to invest in Security?

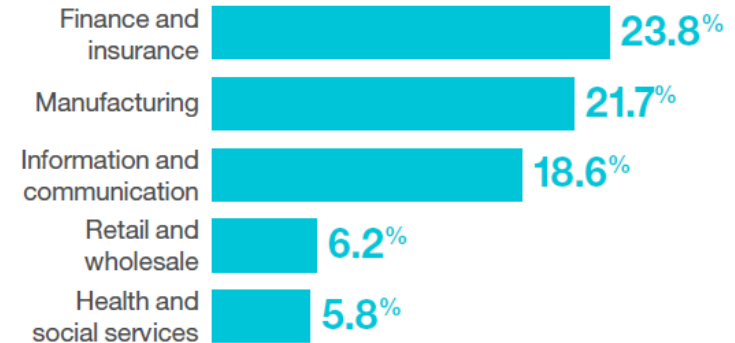
## Categories of incidents



## Categories of attackers



## Incident rates across monitored industries



THE WALL STREET JOURNAL. BUSINESS

TOP STORIES IN BUSINESS 1 of 12 2 of 12 3 of 12

ConocoPhillips Slashes Drilling Budget

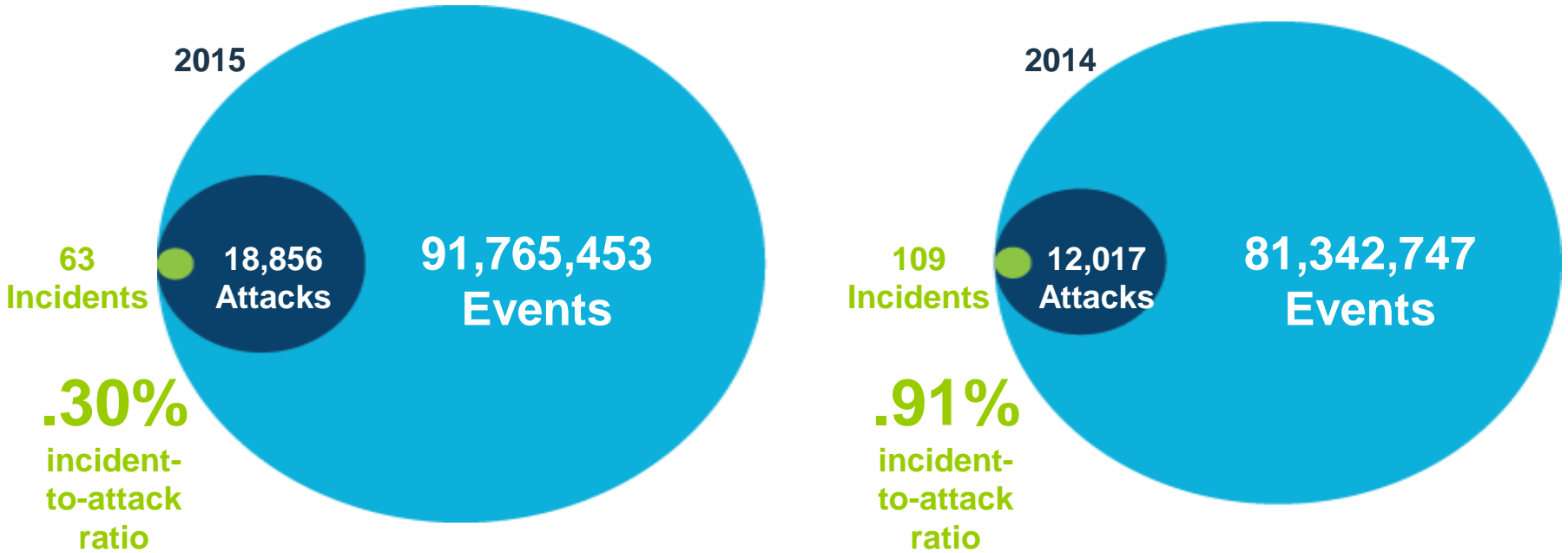
McDonald's November Sales Weaken

China Developer's New Theme: Parks

**BUSINESS**  
**Target Now Says 70 Million People Hit in Data Breach**  
Neiman Marcus Also Says Its Customer Data Was Hacked

For the average client, IBM filters 81,342,747 security events to identify the 109 security incidents that can potentially do harm.

### Annual security events, attacks and incidents



**Incident** Activity serious enough to warrant deeper investigation.

**Attack** Malicious activity attempting to collect, disrupt or destroy information or system resources.

**Event** Activity on a system or network detected by a security device or application



# How to build Security Strategy.

**1** Support the CISO agenda

## Buyers



### CISO, CIO, and Line-of-Business

Deliver a broad portfolio of solutions differentiated through their integration and innovation to address the latest trends

**2** Innovate around megatrends

## Key Security Trends



Advanced Threats



Cloud



Mobile and Internet of Things



Compliance Mandates



Skills Shortage

**3** Lead in selected segments

## Security Portfolio

Strategy, Risk and Compliance

Cybersecurity Assessment and Response. CSIRT.

Security Intelligence and Operations

Advanced Fraud Protection

Identity and Access Management

Data Security

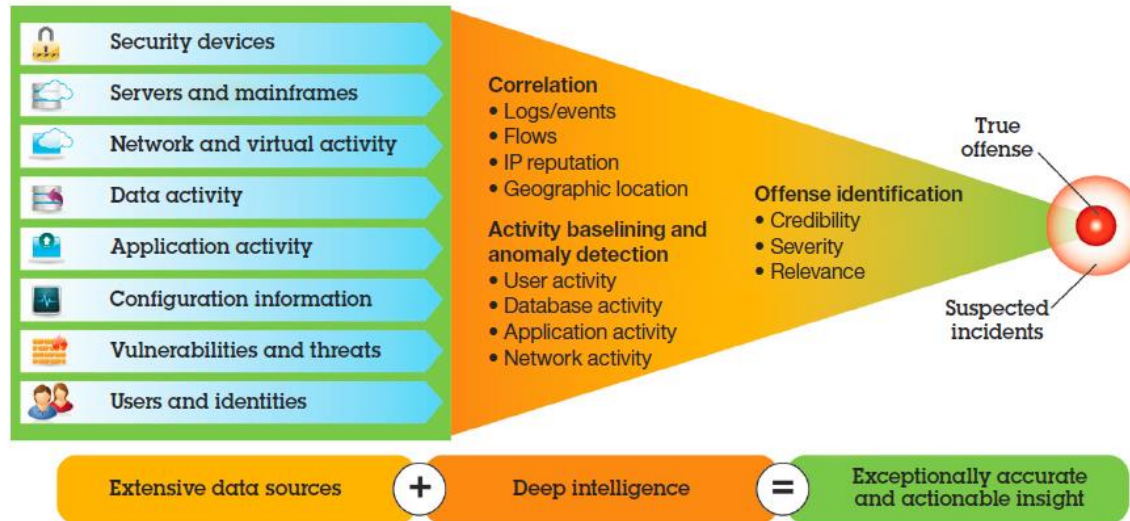
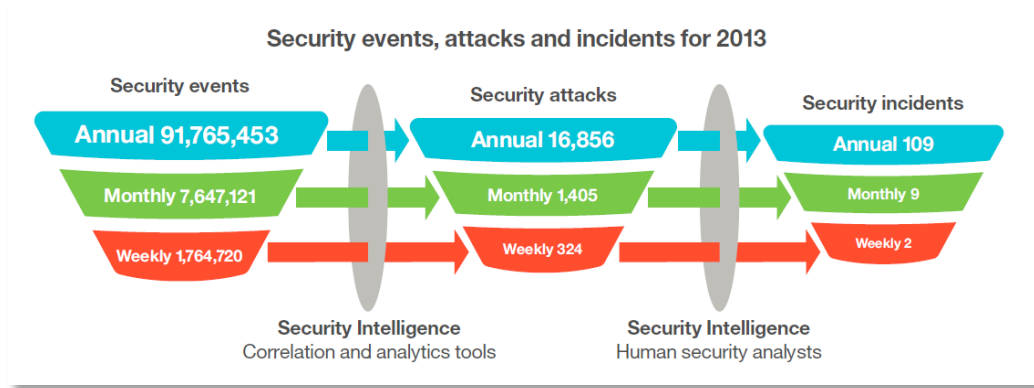
Application Security

Network, Mobile and Endpoint Protection

Advanced Threat and Security Research

Backup slides.



# SIEM Security incident determination.





# THANK YOU

## FOLLOW US ON:

-  [ibm.com/security](https://ibm.com/security)
-  [securityintelligence.com](https://securityintelligence.com)
-  [xforce.ibmcloud.com](https://xforce.ibmcloud.com)
-  [@ibmsecurity](https://twitter.com/ibmsecurity)
-  [youtube/user/ibmsecuritysolutions](https://youtube/user/ibmsecuritysolutions)

© Copyright IBM Corporation 2016. All rights reserved. The information contained in these materials is provided for informational purposes only, and is provided AS IS without warranty of any kind, express or implied. IBM shall not be responsible for any damages arising out of the use of, or otherwise related to, these materials. Nothing contained in these materials is intended to, nor shall have the effect of, creating any warranties or representations from IBM or its suppliers or licensors, or altering the terms and conditions of the applicable license agreement governing the use of IBM software. References in these materials to IBM products, programs, or services do not imply that they will be available in all countries in which IBM operates. Product release dates and / or capabilities referenced in these materials may change at any time at IBM's sole discretion based on market opportunities or other factors, and are not intended to be a commitment to future product or feature availability in any way. IBM, the IBM logo, and other IBM products and services are trademarks of the International Business Machines Corporation, in the United States, other countries or both. Other company, product, or service names may be trademarks or service marks of others.

**Statement of Good Security Practices:** IT system security involves protecting systems and information through prevention, detection and response to improper access from within and outside your enterprise. Improper access can result in information being altered, destroyed, misappropriated or misused or can result in damage to or misuse of your systems, including for use in attacks on others. No IT system or product should be considered completely secure and no single product, service or security measure can be completely effective in preventing improper use or access. IBM systems, products and services are designed to be part of a lawful, comprehensive security approach, which will necessarily involve additional operational procedures, and may require other systems, products or services to be most effective.

IBM DOES NOT WARRANT THAT ANY SYSTEMS, PRODUCTS OR SERVICES ARE IMMUNE FROM, OR WILL MAKE YOUR ENTERPRISE IMMUNE FROM, THE MALICIOUS OR ILLEGAL CONDUCT OF ANY PARTY.